

Overmarine 86



86' (26.2 m) OVERMARINE

LOA:	86' (26.2 m)	Year:	Mfg-1998 Model-1998
Beam:	20'8" (6.3 m)	Mfg:	OVERMARINE
Draft:	Min 6'9" (2.1 m)	Type:	Motor Yacht
Speed:	24 knots / 28 knots		Fly Bridge with Cockpit
Location:	Fort Lauderdale, Florida, United States	Price:	2,100,000 USD

Additional Specifications For Overmarine 86:

LOA:	86' (26.2 m)	Year:	Mfg-1998 Model-1998
Mfg. Length:		Mfg:	OVERMARINE
Beam:	20'8" (6.3 m)	Model:	
Draft:	Min 6'9" (2.1 m)	Type:	Motor Yacht
Hull Mtrl:	GRP		Fly Bridge with Cockpit
Hull Cnfg.:		Top:	
Hull Designer:		Speed:	24 knots / 28 knots
Deck Mtrl:	Teak	Engines:	2xMTU
Tonnage:	80		1850 HP
Range:	380	Engines Year:	
Int Designer:		Staterooms:	4
Ext Designer:		Sleeps:	10
Fuel Cap:	10000 l (2642 g)	Heads:	
Water Cap:	2000 l (528.4 g)	Crew Quarters:	
Holding Tank:		Crew Berths:	
Flag:	British	Captain Cabin:	No
Location:	Fort Lauderdale, Florida, United States	Classifications:	
		Class Type:	
		MCA:	
		ISM:	
		Price:	2,100,000 USD

Accommodations

Vessel in Ft. Lauderdale (April 2007) currently under going a refit. Listing will updated after vessel leaves yard.

The interior of the vessel is split into three levels, with access from the aft deck, the fly-bridge and the starboard side deck. Although she is a performance motor yacht she offers very comfortable accommodations for up to ten guests and four crew, fully air conditioned and well appointed.

Lower Deck, from forward:

Crew accommodations consist of one twin and one single cabin forward, both sharing one head and shower room. Aft is the crew mess with a small table with seating for four, and the galley. The galley is well equipped, with many of the appliances and most of the kitchenware new or recently replaced.

The forward guest accommodations are accessed from the starboard companionway, which connects the dining room and main salon. There are two identical twin cabins, each with twin beds, an extra Pullman berth and an en-suite shower room. The aft guest accommodations consist of a VIP cabin, with a double bed, hanging storage and en-suite shower room, and the Master cabin, with a double bed, sofa, hanging storage and en-suite bathroom. Both cabins are full width and are located amidships for maximum stability.

Main Deck from forward:

Forward and to port is the pantry, with access to the dining room, and to the galley via a custom built

service hatch. To port is a single crew cabin, with access to the side deck and to the crew mess. Formal dining is possible for up to ten guests.

The starboard companionway provides access to the guest accommodations and to the raised wheelhouse. It also has a day head with toilet and wash basin.

Aft is the Main Salon with semi-circular seating and a bar to port. An entertainment stack to starboard has an electrically operated retractable TV, which swivels 360 degrees and can be watched from anywhere in the salon, or from the aft deck. Further aft is a coffee lounge/table, conveniently positioned opposite the bar. Access to the aft deck is via a pair of glass sliding doors.

Galley/Laundry

- Ice maker (salon and fly bridge)
- Refrigerator (galley, salon & flybridge)
- Freezer (galley)
- Miele electric hob
- Sink macerator
- Glass washer (pantry)
- Dryer
- Microwave
- Miele electric oven
- Miele dishwasher
- Extractor fan
- Coffee machine
- Washing machine

Communication & Navigation Equipment

Communication Equipment

- Furuno radar
- Valsat 2008 M2 & Furuno WAAS Navigator GPS
- Shipmate RS2400 chartplotter
- Navtex
- Robertson AP35 autopilot
- 2 x Shipmate RS8400 VHF
- Dataline X
- Simrad echo sounder
- Magnetic compass
- Deltanav loudhailer

Navigation Equipment:

- Geolink Mini M Sat communication
- Hewlett Packard FAX
- Siemens GSM

Entertainment Equipment

Salon:

4/13/2007

Overmarine 86

Page 3

- Sony Mini Hi-24" Sony TV
- Sony DVD (new)
- Sony VCR

Master:

- Flat screen TV
- Sony DVD
- Sony Mini Hi-Fi

VIP:

- Toshiba TV/Video/DVD
- Sony Mini Hi-Fi

2 x Twin:

- Sony TV (new)
- DVD (new)

Crew:

- 3x TV (new)
- CD Player
- DVD Player

Electrical System

Generators & Electricity:

GENERATORS: 2x Kohler 25kW

ELECTRICITY: 220/380V AC & 24V DC

BATTERIES: Separate engine & services, Mastervolt charger

AIR CONDITIONING: 2 x Frigit compressors

Mechanical Equipment

ENGINES: 2 x MTU 1850hp

GEARBOXES: ZF BW250 Series

STEERING: BSC Hydraulic

Other machinery

Main engines: 2x MTU 1850hp

Bowthruster: BSC 33.5 Kw

Engine Controls: MTU Electronic

Fuel Separator: Racor

Watermaker: Idromar

Deck Equipment

- Hydraulic tender/jetski crane
- 2 x aft capstan winches
- 2 x Danforth anchors with 100 & 120 meter chain

- Fly bridge bimini top
- 2 x anchor windlass

Tenders & Toys

- Zodiac 420 with inboard 90hp petrol engine
- Yamaha GPR 800 jetski
- 2 x waterskis

Safety and Fire Protection

- 220 & 24V Bilge pumps
- 2 x eight person SOLAS liferaft (new 2004)
- Lifejackets, flares, liferings, etc
- Engine room CO2 system
- 2 x seawater deck hoses
- Extinguishers throughout accommodations

Disclaimer

All speeds, capacities, consumption, etc. are approximate or estimated; measurements can also be approximate. Specifications are provided for information only, and particulars herein obtained from sources believed to be correct, but are not guaranteed. Buyer should instruct his agent and/or surveyor to check all details for accuracy. Offered subject to prior sale, price and/or inventory change, or withdrawal from the market without notification.

Salon



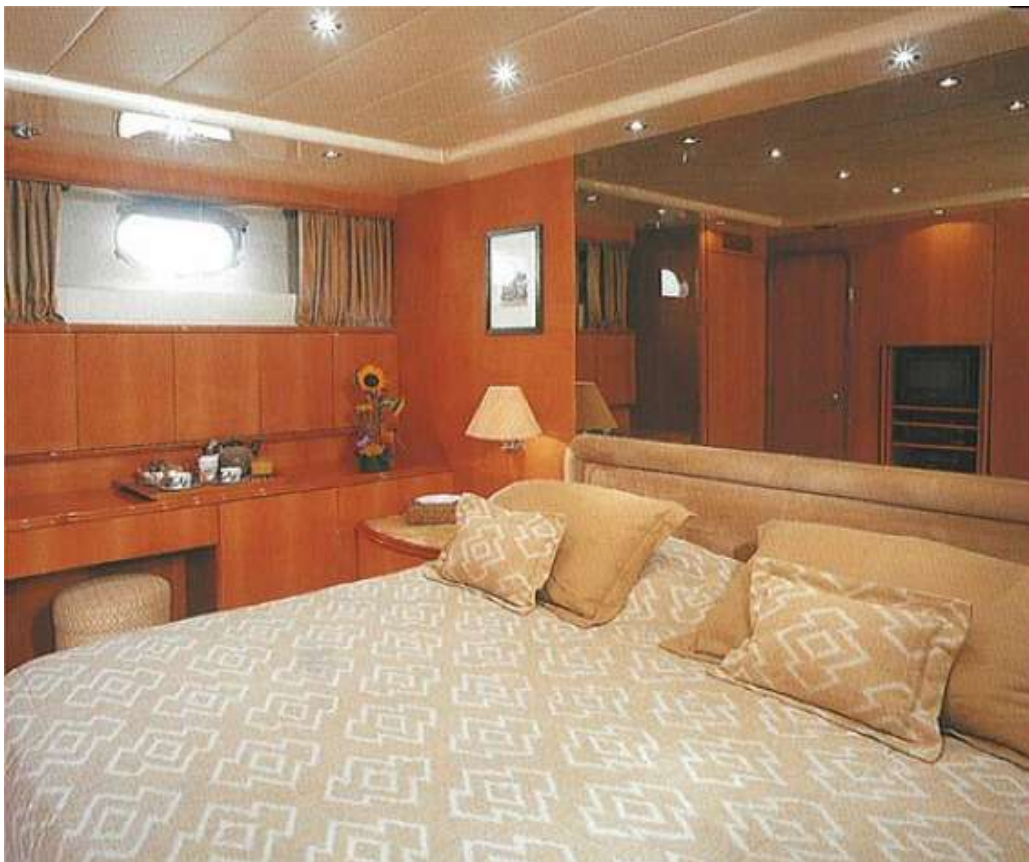
Dining



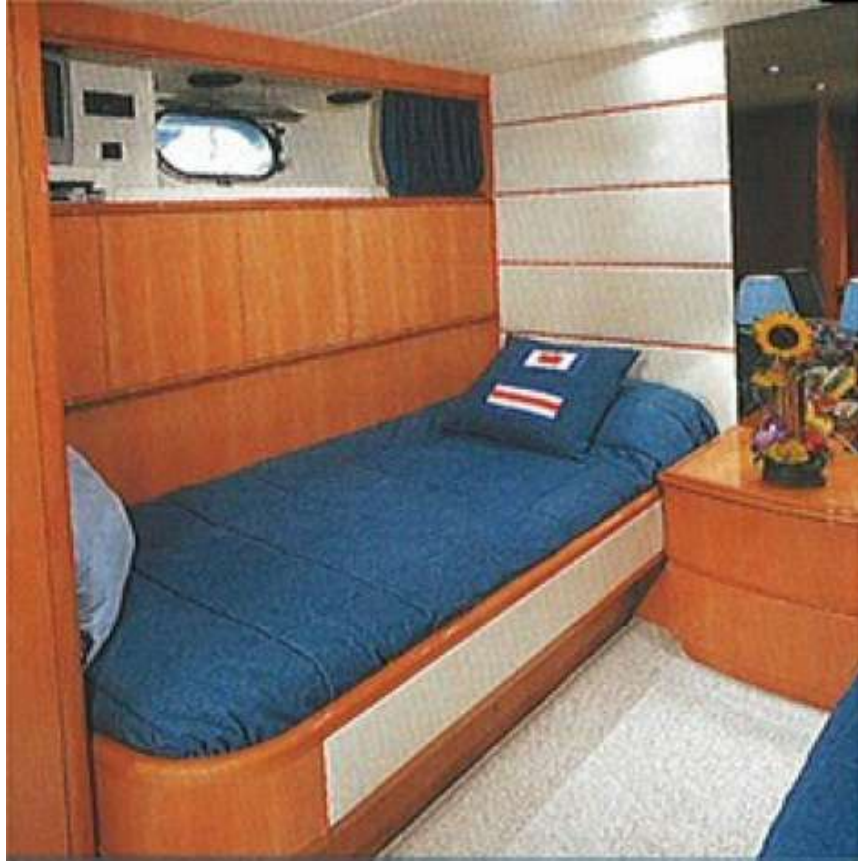
Master Stateroom



VIP Stateroom 1



Guest Stateroom 1



Fly Bridge



Aft deck



Pilothouse



Layout

